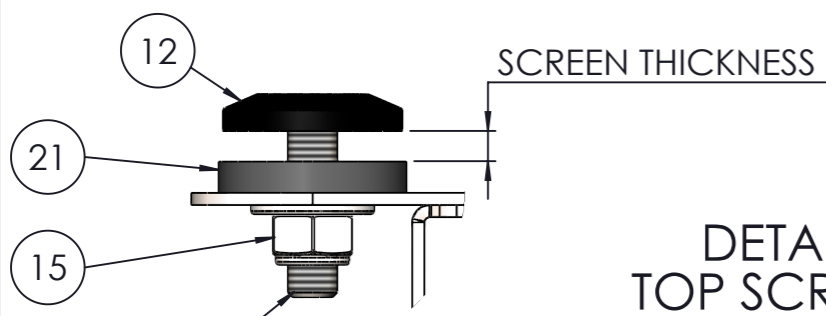
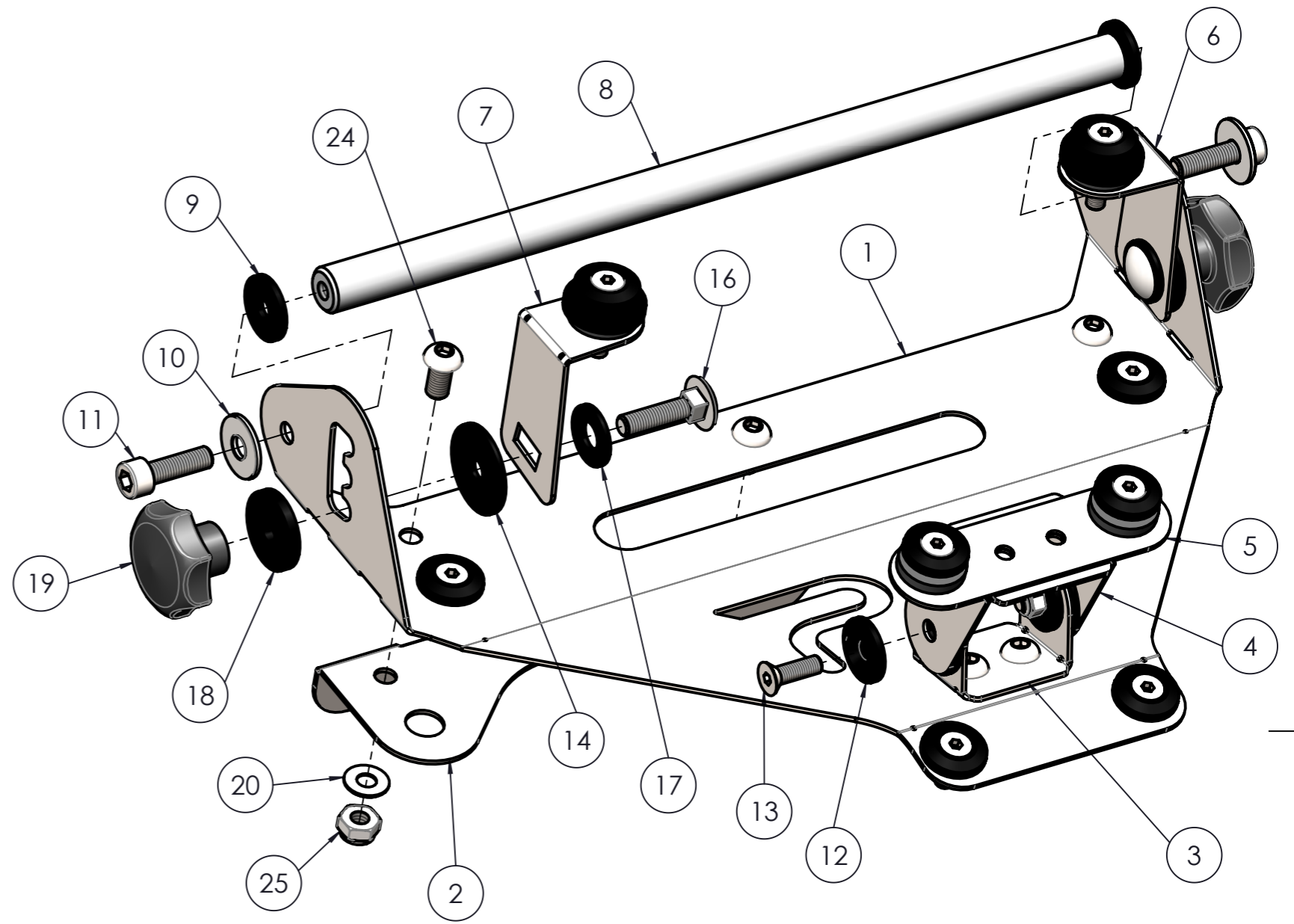
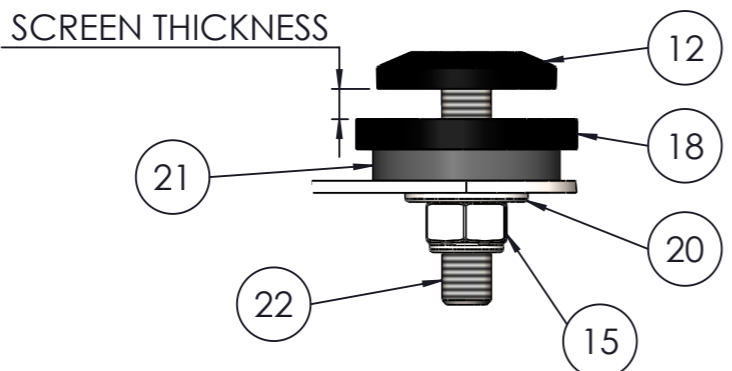


DETAIL 'A' (NTS) BOTTOM SCREEN FIXINGS



DETAIL 'B' (NTS) TOP SCREEN FIXINGS



POS.	QTY.	MATERIAL NUMBER	DESCRIPTION
1	1	TRI-TIG-008	SUB FRAME, TRIUMPH TIGER SPORT, 2016 MY
2	1	TRI-TIG-009	HORIZONTAL SUB FRAME BRACKET, TRIUMPH TIGER SPORT, 2016 MY
3	1	TRI-TIG-010	'C' BRACKET FOR SUB FRAME, TRIUMPH TIGER SPORT, 2016 MY
4	1	TRI-TIG-011	'C' BRACKET FOR SCREEN, TRIUMPH TIGER SPORT, 2016 MY
5	1	TRI-TIG-012	SCREEN FIXING PLATE, TRIUMPH TIGER SPORT, 2016 MY
6	1	TRI-TIG-013/B	SCREEN BRACKET, LH, TRIUMPH TIGER SPORT, 2016 MY
7	1	TRI-TIG-013/A	SCREEN BRACKET, RH, TRIUMPH TIGER SPORT, 2016 MY
8	1	UNI-001	ACCESSORY BAR
9	4	N/A	M6 X 18 X 2 NYLON WASHER
10	2	N/A	M6 FORM G FLAT WASHER
11	2	N/A	M6 X 20, CAP HEAD SCREW
12	10	N/A	M5 COUNTERSUNK FINISHING WASHER NYLON
13	6	N/A	M5 X 16, SOCKET COUNTERSUNK SCREW
14	4	N/A	M6 X 25 X 1.6, NYLON WASHER
15	6	N/A	M5 LOCKING NUT (NYLOCK)
16	2	N/A	M6 X 25, COACH BOLT
17	2	N/A	M8 FORM A X 1.6, NYLON WASHER
18	4	N/A	M6 X 20 X 3 NYLON WASHER
19	2	N/A	M6 TOOL-LESS ADJUSTER KNOB
20	9	N/A	M5 FORM C FLAT WASHER
21	4	N/A	M4 X 18 X 3 RUBBER RETAINING WASHER
22	2	N/A	M5 X 25, SOCKET COUNTERSUNK SCREW
23	2	N/A	M5 X 20, SOCKET COUNTERSUNK SCREW
24	5	N/A	M6 X 12, SOCKET BUTTON HEAD SCREW
25	5	N/A	M6 LOCKING NUT (NYLOCK)

		Surface ISO 1302 Vers. 2002	Surface treatment	Preferred material STAINLESS STEEL 304/316 1.2mm Alternative material
Check for product safety necessary (PS)		Size ISO 14405(E)	Technology of production	Mass
Date		Name	Description SCREEN KIT ASSEMBLY, STD SCREEN, TRIUMPH TIGER SPORT, 2016 MY	
Type of supplementary document		Project classification		
Type of supplementary document		Comp. level	Comp. counter	Comp. char.
Laboratory/Office		Scale NTS		Size A3
Change no.		Date	Name	Doc. type
Document no. TRI-TIG-014		Doc. part	Version 1	Sh. 1 of 1

Refer to protection notice ISO 16016 / Copyright reserved
 Modell Name: TRI-TIG-014, ISSUE 1 / Configuration: FULL / Drawing Name: TRI-TIG-014, ISSUE 1