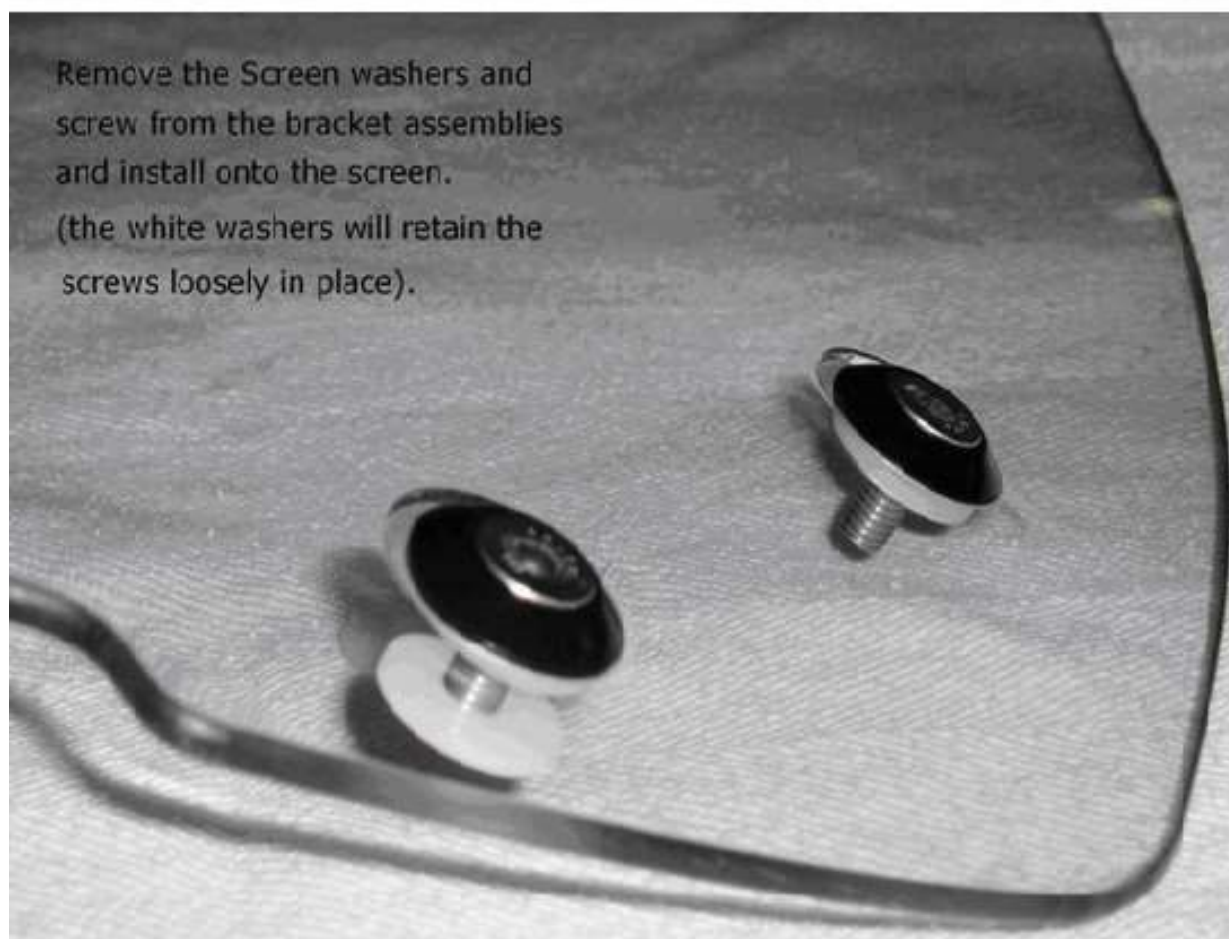




Remove the Cowl & Screen assembly using the 1/16" Allen Key provided.

The separate the Screen from the Cowl and remove the rubber spacers.

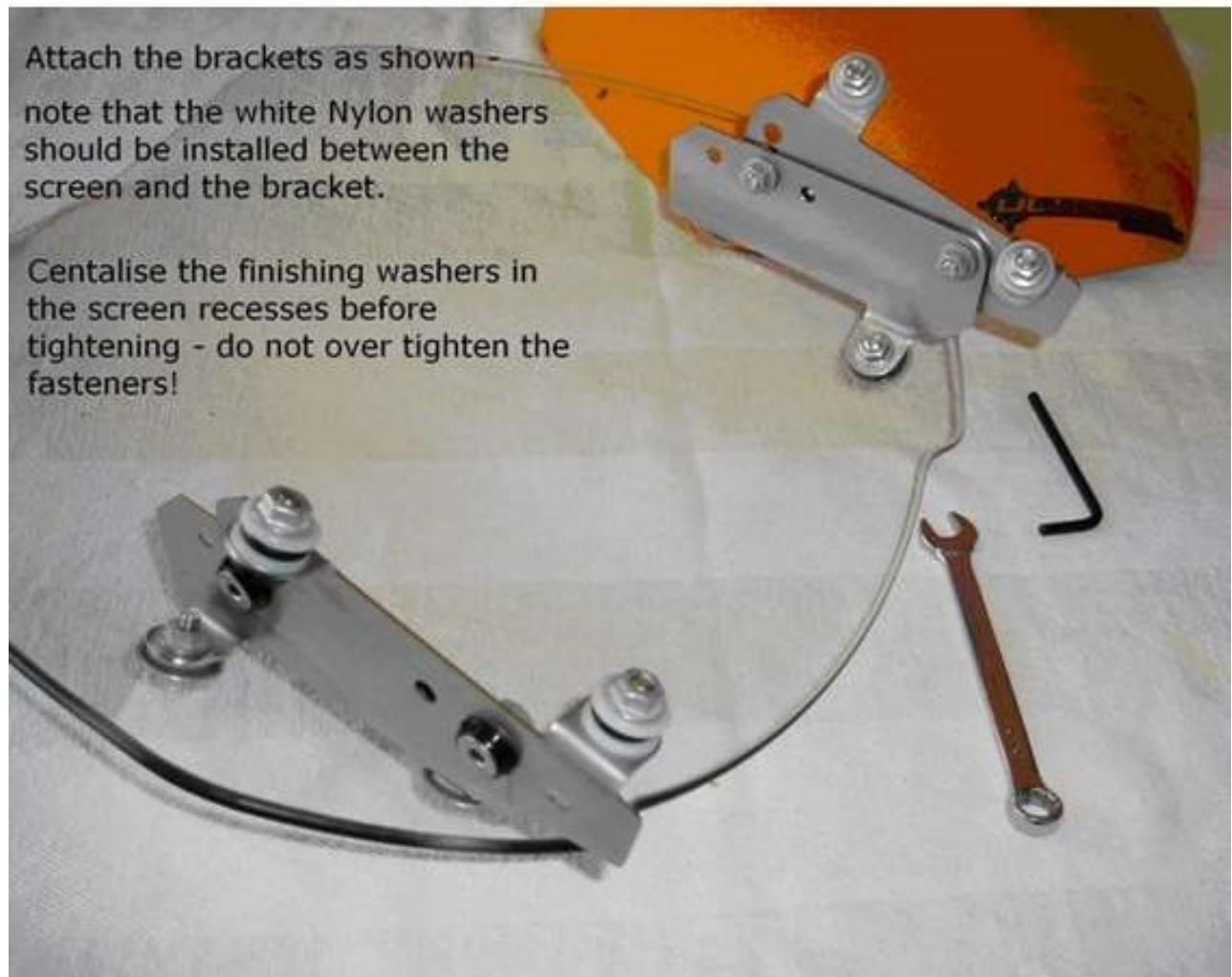


Remove the Screen washers and screw from the bracket assemblies and install onto the screen.

(the white washers will retain the screws loosely in place).

Attach the brackets as shown -
note that the white Nylon washers
should be installed between the
screen and the bracket.

Centralise the finishing washers in
the screen recesses before
tightening - do not over tighten the
fasteners!



Centralise the finishing washers as
accurately as possible - best done
with the fasteners lightly
tightened.

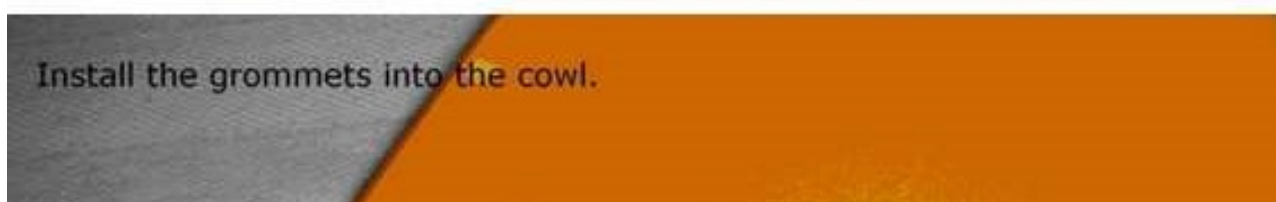
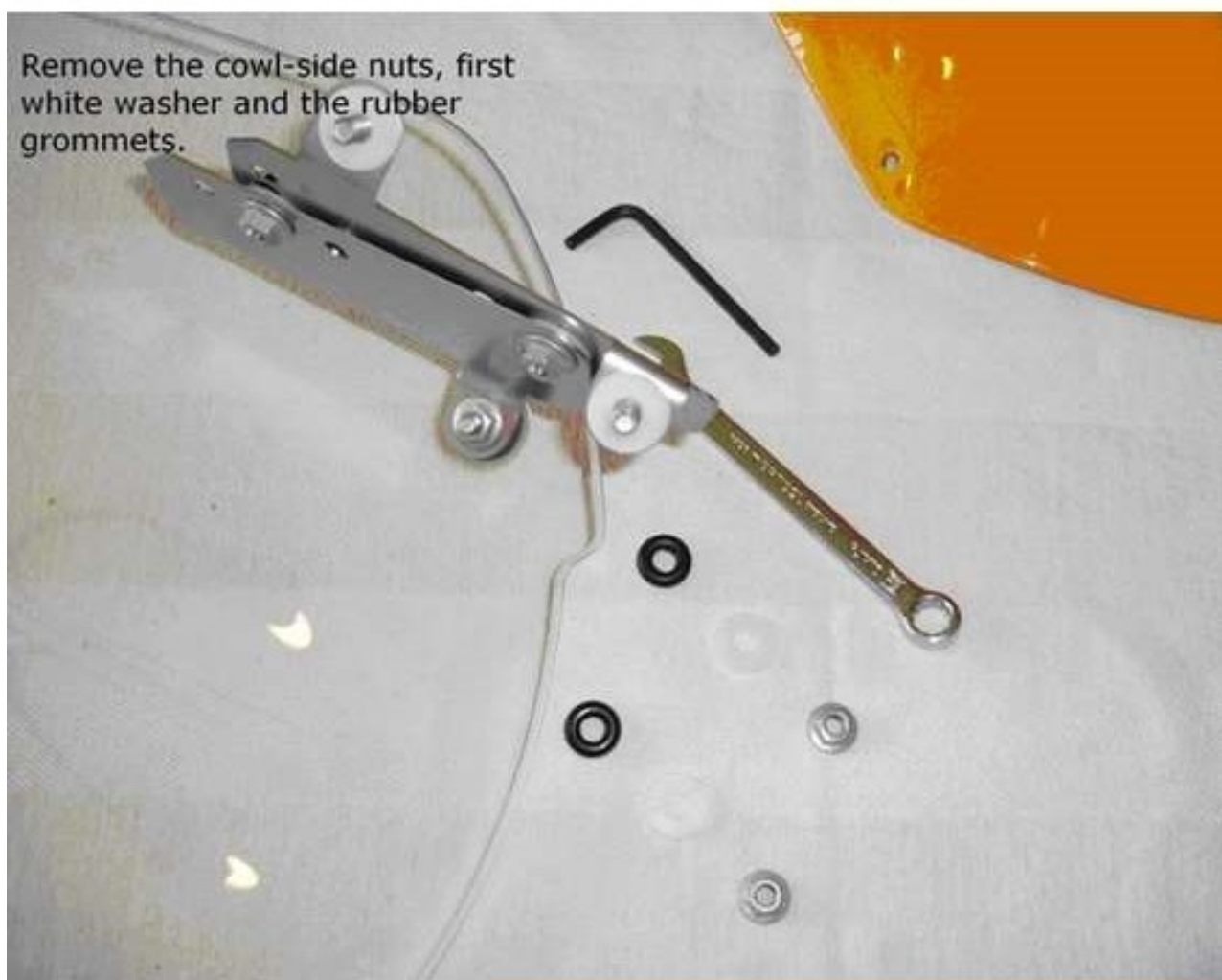
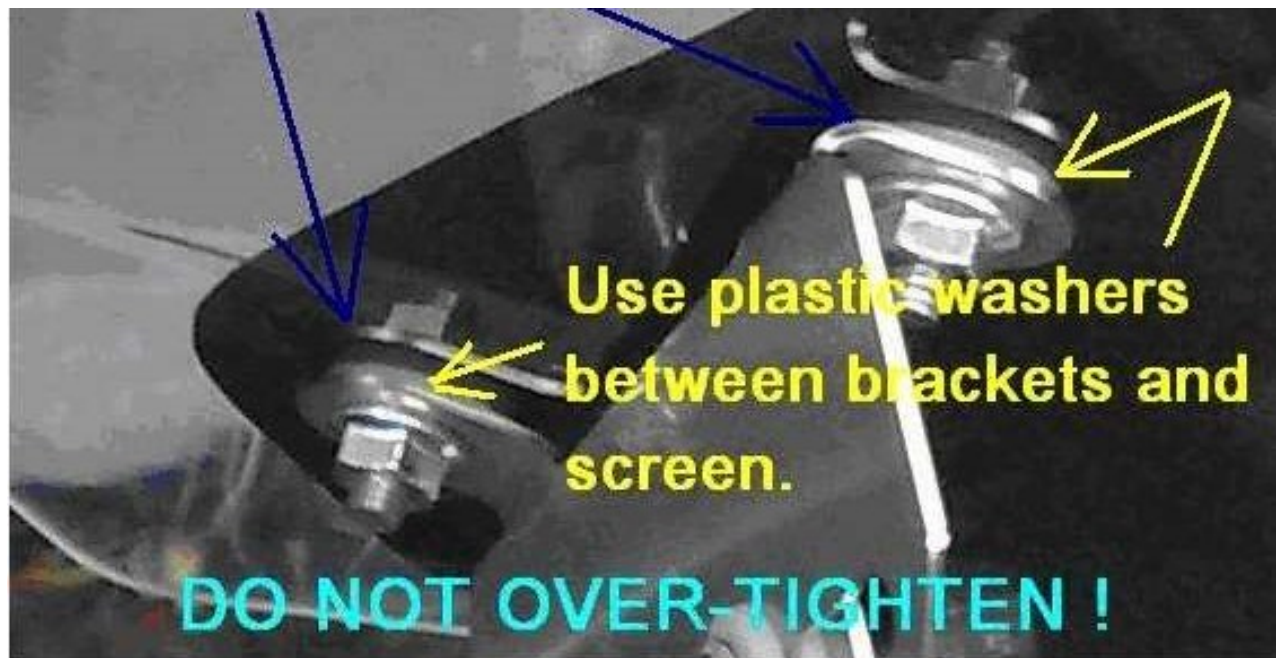


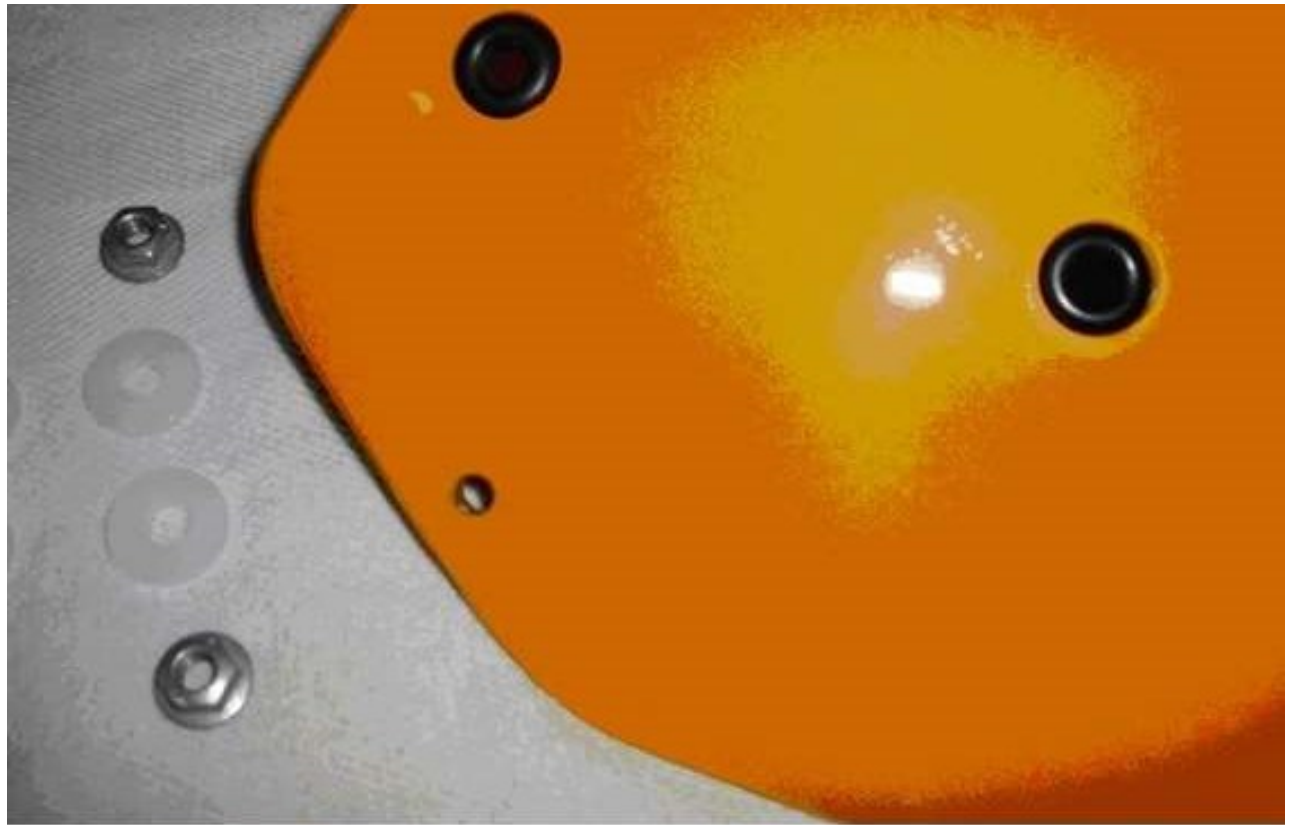


If possible, check the brackets are parallel to each other.



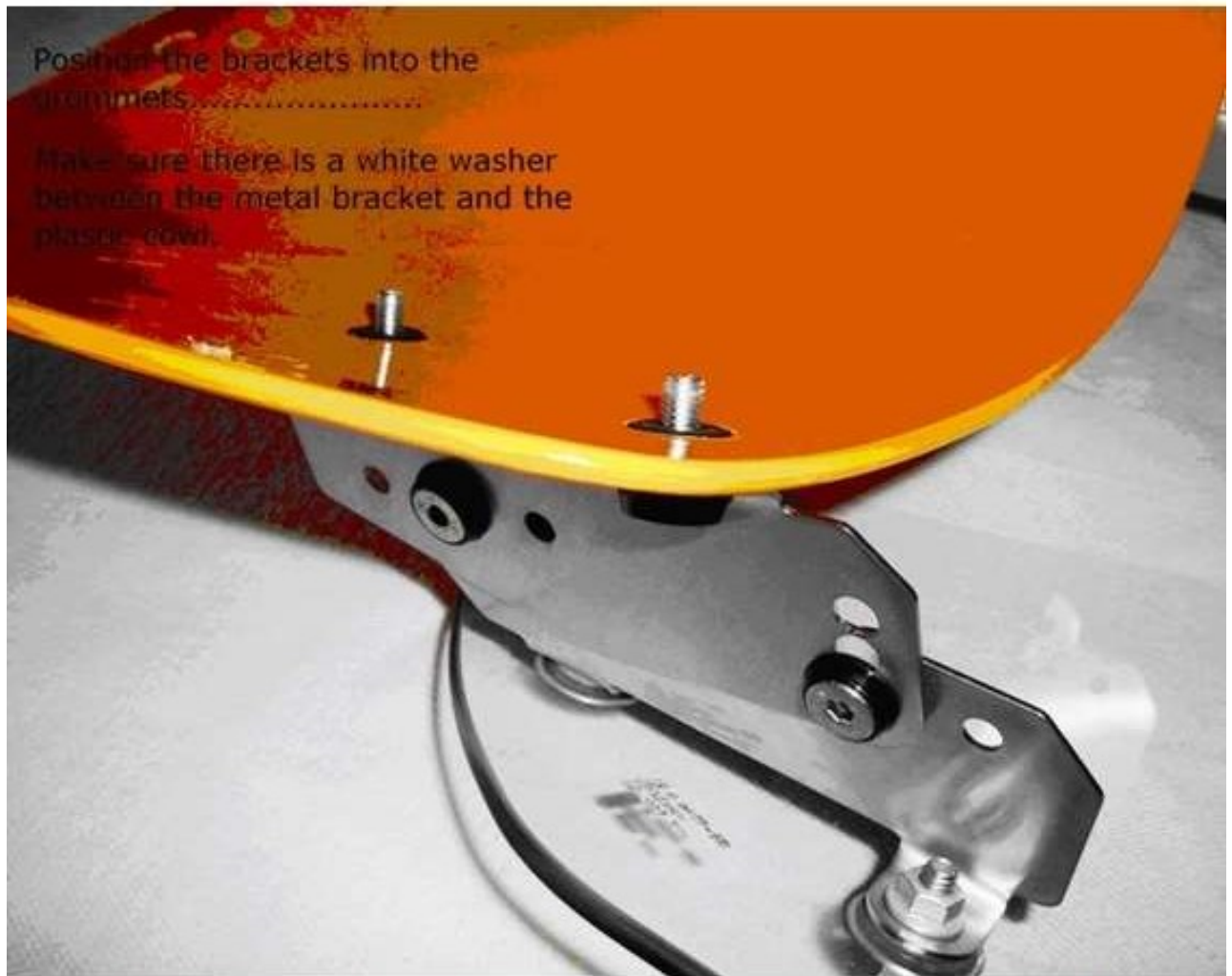
It is important to check that the bracket tabs are parallel with the screen you are using before fastening - the tabs can be bent to provide exactly the right angle if necessary.





Position the brackets into the grommets.....

Make sure there is a white washer between the metal bracket and the plastic cowling.



Insert the washers and nuts then tighten.

Note: there must be a white washer each side of the cowl.



Now carefully replace the whole assembly into the bike.



Apply the Foam-Rubber pads as shown - need to be located in the top mount fixings proximity. (Shape and colour may vary)



Flatly, mount the brackets and screen.

Fit one brace at a time - remove the top fastener and mount loosely as shown (note the washer positions)

Fit the P-Clip onto the cross bar as shown and loosely fasten

Centralise the brace bar then tighten both ends, ensuring it doesn't foul the screen.

